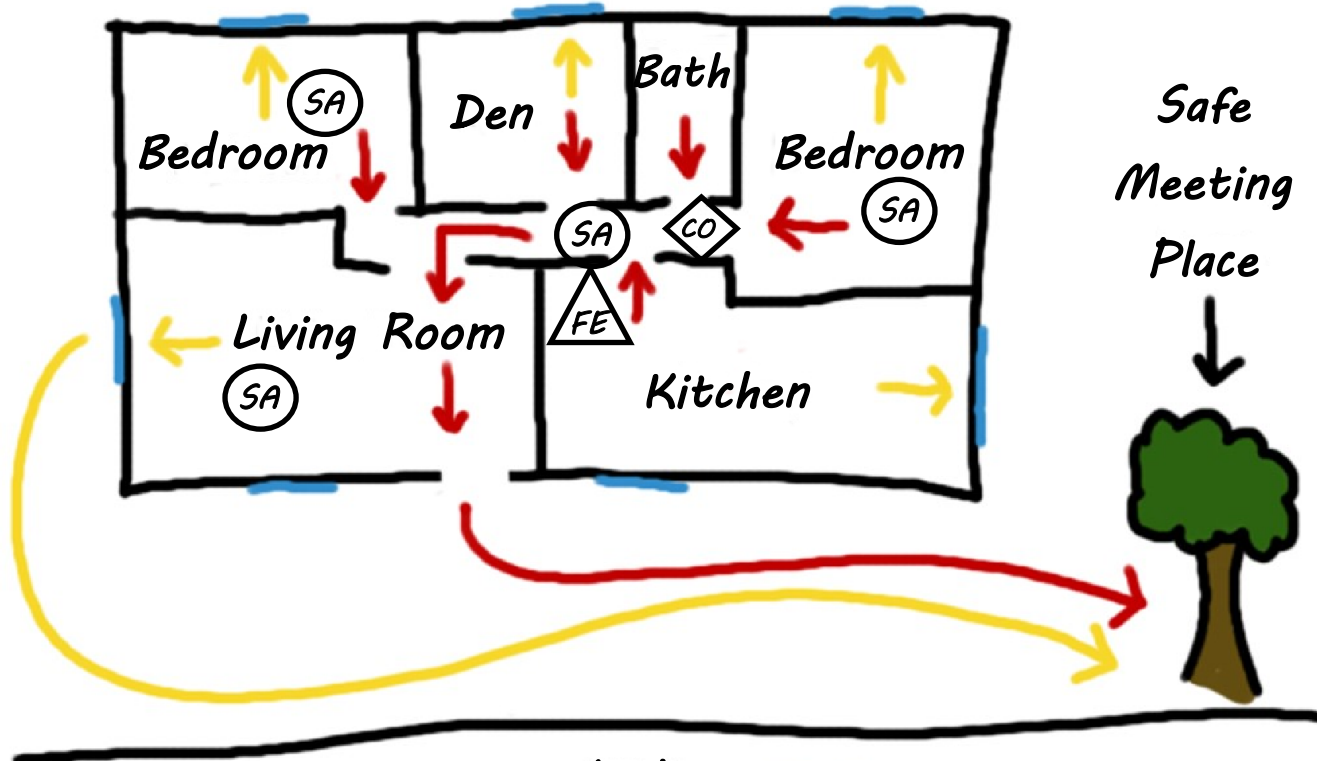








# Foster Home Fire Drill Planner



- Window 
- Primary Escape Path 
- Secondary Escape Path 
- Smoke Alarm 
- Carbon Monoxide Alarm 
- Fire Extinguisher 



SOUTH CAROLINA  
**STATE FIRE**

Draw the layout of your home as best you can. Include:

- Doorways
- Windows
- Each room
- Smoke alarm locations (label "SA") \*Date installed \_\_\_\_\_
- Carbon monoxide alarm location(s) (label "CO") \*Date installed \_\_\_\_\_
- Fire extinguisher location(s) (label "FE") \*Date Serviced \_\_\_\_\_

Visit each room in your home and:

- Find two ways out
- Draw arrows on your "Fire Drill Planner" showing two ways out

Draw a separate floor plan for:

- Basements, 2<sup>nd</sup> or 3<sup>rd</sup> floors, Finished room over garage (FROG)

Mark your Fire Drill Planner with your safe meeting place:

- Pick a solid object that isn't easily moved, such as a tree
- Make sure the object is far enough from your home so it's safe to stand there

Remember:

- Practice your fire drill every three months and within 24 hours of the arrival of a new foster child. Try escaping from every room and **closing doors as you escape**
- Sleeping with your bedroom door closed** may save your life
- Closing doors** as you escape may save your life
- Doorways and windows should open easily to get outside
- If safe, windows can be used for escape outside
  - ◆ Practice with your family to make sure you can open the window, remove any screens, and get to the ground safely
- NEVER** stop to pick up anything on the way out (even while practicing your fire drill)
- NEVER** go back into the home **FOR ANY REASON** (even while practicing your fire drill)
- Call 911 from outside the home, after you've escaped (pretend to call 911 when practicing your fire drill)

